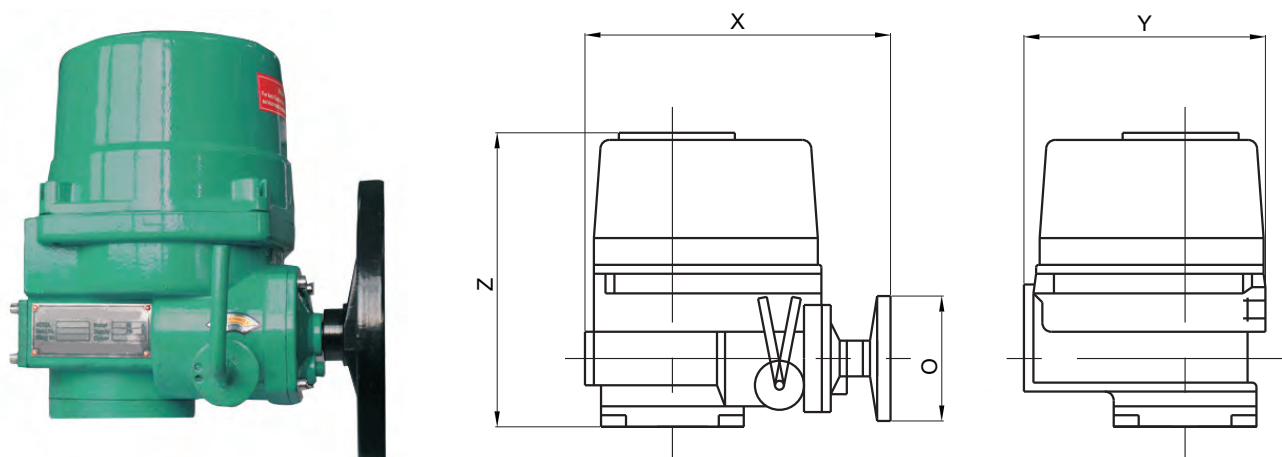


Electric Actuator

1-Stage Quarter-Turn Transmission



**Base features**

The case is processed by means of aluminum die-casting technology and precision machining technique.

Light weight and small size, outer surface is treated through flame plating technique to give an excellent appearance.

Easy to adjust the end position of stroke control and set torque switch and reliable on control.

High accuracy of driving medium, ball bearings are fitted at all rotating positions, high efficiency of whole machine and negligible noise.

Driving of the output shaft is carried out through worm gear and can be self-locked at any position.

There is an mechanical adjustable stop for valve and position control.

The manual/electric declutch is of semi-automation and electric-priority to ensure safe and reliable operation

Possessing ideal outdoor performance

Various flange connection modes, there is a valve stem adapter in the inner of output shaft, easy to mount and dismount.

**Selected Function**

4-20mA DC valve position feedback signal

Increasing electric block with automatic adjusting function

Increasing limit switch to give passive control contacts

Performing integral control, possessing local/remote-control shifting function and opening, closing and stop at local control functions

Fitted with heat protection element for electric motor.

Fitted with space heater in the inner of electric control cave.

Turn angle of output shaft is more or less than 90°

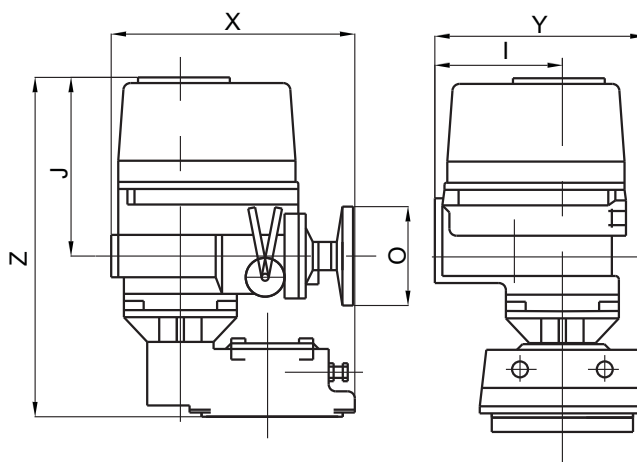
Other special function requirement.

**Dimensions**

Type	QT03	QT04	QT06	QT09	QT15	QT19	QT28	QT38	QT50	QT60	QT80	QT100
Flange	F05	F05	F07	F07	F07	F07	F10	F10	F10	F10	F05	F10
ISO5211	F07	F07			F10	F10	F12	F12	F12	F14	F14	F14
X	241	241	241	241	272	272	290	290	290	331	331	331
O	200	200	200	200	250	250	350	350	350	350	350	350
Z	256	256	256	256	263	263	298	298	298	342	342	342
Y	208	208	208	208	239	239	274	274	274	306	306	306
Output Torque(N*m)	30	40	60	90	150	190	280	380	500	600	800	1000
Output Speed(r/min)	0.9	0.9	0.9	0.9	0.7	0.7	0.6	0.6	0.6	0.5	0.5	0.5
Reference power(kw)	0.01	0.01	0.02	0.03	0.04	0.04	0.04	0.06	0.09	0.09	0.18	0.2
Rated current(A)	0.2	0.2	0.25	0.3	0.8	0.8	0.8	1.2	1.6	1.6	3.2	3.6

Electric Actuator

2-Stage Quarter-Turn Transmission



**Base features**

The case is processed by means of aluminum die-casting technology and precision machining technique.  
 Light weight and small size, outer surface is treated through flame plating technique to give an excellent appearance.  
 Easy to adjust the end position of stroke control and set torque switch and reliable on control.  
 High accuracy of driving medium, ball bearings are fitted at all rotating positions, high efficiency of whole machine and negligible noise.  
 Driving of the output shaft is carried out through worm gear and can be self-locked at any position.  
 There is an mechanical adjustable stop for valve and position control.  
 The manual/electric declutch is of semi-automation and electric-priority to ensure safe and reliable operation  
 Possessing ideal outdoor performance  
 Various flange connection modes, there is a valve stem adapter in the inner of output shaft, easy to mount and dismount.

**Selected Function**

4-20mA DC valve position feedback signal  
 Increasing electric block with automatic adjusting function  
 Increasing limit switch to give passive control contacts  
 Performing integral control, possessing local/remote-control shifting function and opening, closing and stop at local control functions  
 Fitted with heat protection element for electric motor.  
 Fitted with space heater in the inner of electric control cave.  
 Turn angle of output shaft is more or less than 90°  
 Other special function requirement.

**Dimensions**

Type	QT150	QT200	QT250
Flange	F16	F16	F16
ISO5211	F14	F14	F14
Z	505	505	505
J	264	264	264
H	241	241	241
X	357	357	357
O	350	350	350
T	132	132	132
Y	323	323	323
Output Torque(N*m)	1500	2000	2500
Output Speed(r/min)	0.2	0.2	0.17